

ABU FARWA

Arabian | Male | Chestnut

BORN May 22, 1940 · ASSOC. AHR · REG # 1960



PARENTS

GRANDPARENTS

GREAT-GRANDPARENTS

GG-GRANDPARENTS

SIRE LINE

DAM LINE



RABIYAS

1936
AHR 1236
Chestnut

Rabiya's 1236



RAHAS

1928

RAHAS, A great father of Marwanis breeding and after the Marwanis dispersed a foundation sire for the Herby program in California.



RABIYAT

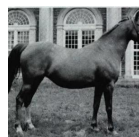
1926

Clayton Brown Edwards' Sire — Dr 1926 from Rabiya (Sheik's "Queen").



Naseem

1922
RASB 5



Risslina

1926



GULASTRA

1924



RAAD

1922



REHAL

1923
AHR 504



ROKHSA

1915



SKOWRONEK

1909
GSB 552



Nasra

1908
GSB 532



RAFEEF

1917



Rissla

1917

ASTRALED

1900 | AHR 238

GULNARE

1914

Sidi

1917

Rijma

1911

Sidi

1917

RAMIM

1915

NASIK

1908 | AHR 604

ROKHAMA

1906

IBRAHIM

1898 | PASB 407

Jaskolka

1891

DAOUD

1899 | AHSB 9

Nefisa

1885

NASIK

1908 | AHR 604

Riyala

1905 | GSB 491

Berk

1903 | AHR 343

Risala

1900 | GSB 388