



ANAGA

Arabian | Female | Chestnut

BORN 1940



PARENTS

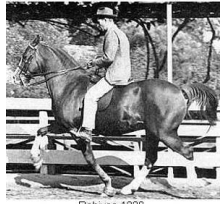
GRANDPARENTS

GREAT-GRANDPARENTS

GG-GRANDPARENTS

SIRE LINE

DAM LINE



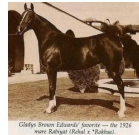
RABIYAS
1936
AHR 1236
Chestnut

Rabiyas 1236



RAHAS
1928

Rahas. A great father of Marwanis breeding and after the Marwanis dispersed a foundation sire for the breed program in California.



RABIYAT
1926

Chief Sire of Edward's Sirey — Dr 1926 with Rabiya (Sheik's Sirey).



GULASTRA
1924



RAAD
1922



REHAL
1923
AHR 504



ROKHSA
1915



NUREDDIN II
1911
AHR 974



Ferda
1913
AHR 596



SKOWRONEK
1909
GSB 552



ROSE OF HIND
1902

ASTRALED
1900 | AHR 238

GULNARE
1914

Sidi
1917

Rijma
1911

Sidi
1917

RAMIM
1915

NASIK
1908 | AHR 604

ROKHAMA
1906

RIJM
1901 | GSB 393

Narghileh
1895 | GSB 265

RUSTEM
1908 | GSB 548

Feluka
1899 | AHSB 10

IBRAHIM
1898 | PASB 407

Jaskolka
1891

REJEB
1897 | GSB 317

Rose Diamond
1890 | GSB 174