



BAMBY

Arabian | Male | bay

BORN June 9, 1947 · ASSOC. AHA · REG # 4354



PARENTS

GRANDPARENTS

GREAT-GRANDPARENTS

GG-GRANDPARENTS

SIRE LINE

DAM LINE



RAFFLES

1926
AHR 952
Grey

*Raffles 952



SKOWRONEK

1909
GSB 552



Rifala

1922
Arabian Horse Association 815



IBRAHIM

1898
PASB 407



Jaskolka

1891



SKOWRONEK

1909
GSB 552



Rissla

1917

HEIJER

Lafitte

Rymnik

1876

Epopeja

1875

IBRAHIM

1898 | PASB 407

Jaskolka

1891

Berk

1903 | AHR 343

Risala

1900 | GSB 388

IBRAHIM

1898 | PASB 407

Jaskolka

1891

SKOWRONEK

1909 | GSB 552

Rissla

1917

Unknown

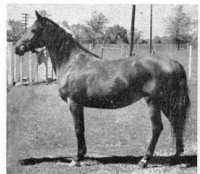
Arjemonde

1930 | AHR 859

Unknown

Noura

1916



Bambina

1942
Bay

BAMBINA 2272 (*Raffles-Rihani) died last spring of the McEwen Farm near Wichita, Kans.



RAFFLES

1926
AHR 952

*Raffles 952

Rihani

1933
AHR 1015



SKOWRONEK

1909
GSB 552



Rifala

1922
Arabian Horse Association 815

*SAOUD

1922
AHR 687

*Muha

1928
AHR 689