

# DAMASCUS

Arabian | Male | Chestnut

BORN 1943



## PARENTS

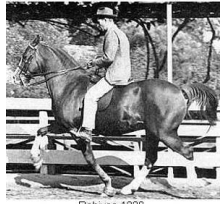
## GRANDPARENTS

## GREAT-GRANDPARENTS

## GG-GRANDPARENTS

SIRE LINE

DAM LINE



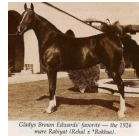
**RABIYAS**  
1936  
AHR 1236  
Chestnut

Rabiyas 1236



**RAHAS**  
1928

Rahas, a great father of Marwanis breeding and after the Marwanis dispersed a foundation sire for the breed program in California.



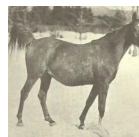
**RABIYAT**  
1926

Clayton Brown Edwards' Sire — Dr. 1926 with Rabiyat (Sheik a' Saad).



**GHAZI**  
1925  
AHR 560

Ghazi



**Rayik**  
1926



**GULASTRA**  
1924



**RAAD**  
1922



**REHAL**  
1923  
AHR 504



**ROKHSA**  
1915



**\*RODAN**  
1906



**GUEMURA**  
1912



**REHAL**  
1923  
AHR 504



**Roshana**  
1920

**ASTRALED**  
1900 | AHR 238

**GULNARE**  
1914

**Sidi**  
1917

**Rijma**  
1911

**Sidi**  
1917

**RAMIM**  
1915

**NASIK**  
1908 | AHR 604

**ROKHAMA**  
1906

**HARB**  
1901

**Rose of Sharon**  
1885

**Segario**  
1902

**Ghazala**  
1896 | AHR 211

**Sidi**  
1917

**RAMIM**  
1915

**Berk**  
1903 | AHR 343

**ROKHSA**  
1915