

DAZEERA

Arabian | Female | Chestnut

No Photo

BORN 1971



PARENTS

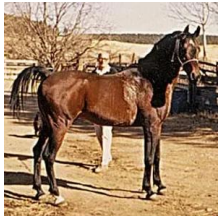
GRANDPARENTS

GREAT-GRANDPARENTS

GG-GRANDPARENTS

SIRE LINE

DAM LINE



RASHAD IBN NA...
1955
Bay



Nazeer
1934
RAS 247



YASHMAK
1941



EL SAREEI
1942



DAHMA II
1950
EOA 224



MANSOUR
1921
RAS 111



Bint Samiha
1925
RAS 133



SHEIKH EL ARAB
1933
RAS 228



BINT RISSALA
1920



SHAHLOUL
1931



ZAREEFA
1927



Nazeer
1934
RAS 247



FUTNA
1943

Gamil Manial
1912

NAFAA EL SAGHIRA
1910

KAZMEEN
1916

Samiha
1918 | RAS 93

MANSOUR
1921 | RAS 111

Bint Sabah
1925 | RAS 135

IBN YASHMAK
1902

Risala
1900 | GSB 388

IBN RABDAN
1917 | RAS 86

BINT RADIA
1920

KAZMEEN
1916

Durra

MANSOUR
1921 | RAS 111

Bint Samiha
1925 | RAS 133

SHAHLOUL
1931

FARIDA
1921

Duplicates: ● Nazeer ● MANSOUR ● Bint Samiha ● SHAHLOUL ● KAZMEEN

Pedigree of Dazeera | Generated June 25, 2026