

DRAFFNA

Arabian | Female | Grey

No Photo

BORN 1942



PARENTS

GRANDPARENTS

GREAT-GRANDPARENTS

GG-GRANDPARENTS

SIRE LINE



INDRAFF
1938
AHR 1575
Grey



RAFFLES
1926
AHR 952



SKOWRONEK
1909
GSB 552



Rifala
1922
Arabian Horse Association 815

IBRAHIM
1898 | PASB 407

Jaskolka
1891

SKOWRONEK
1909 | GSB 552

Rissla
1917

RASIM
1906 | GSB 517

Rim
1910 | GSB 581

NUREDDIN II
1911 | AHR 974

Nasra
1908 | GSB 532

SEYAL
1897 | GSB 320

Bukra
1896 | GSB 283

RIJM
1901 | GSB 393

Risala
1900 | GSB 388

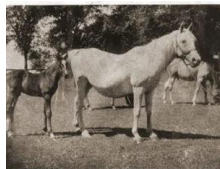
Segario
1902

Najine
1899

Garaveen
1892

Nonliker
1898

DAM LINE



Nabika
1928
Grey

NABIKA 553 by RIBAL ex NEKI with her 1919 foal sired by COMAR is shown at the top of her pedigree. She and other George H. Case or Elmer's (Elmer) that is NABIKA's maternal dam and she was born only one year old at the time. She is expecting a foal in 1930. NABIKA was bred by Dr. W. Brown.



Indaia
1927
AHR 813



RIBAL
1920
AHR 397



Raseem
1922



Nisreen
1919
GSB 706



Berk
1903
AHR 343



Rijma
1911



Sargon
1915



Onrust
1903

Nek
1922