



# FA-RAB

Arabian | Male | Grey

BORN 1951



## PARENTS

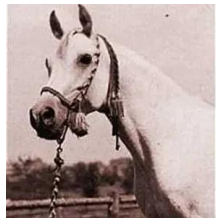
## GRANDPARENTS

## GREAT-GRANDPARENTS

## GG-GRANDPARENTS

SIRE LINE

DAM LINE



**FADL**  
1930  
AHR 896  
Grey



**IBN RABDAN**  
1917  
RAS 86



**RABDAN**  
1897  
RAS 49



**Bint Gamila**  
1911  
RAS 60



**MABROUK MANIAL**  
1912



**Negma**  
1920  
RAS 45



**MAHROUSSA**



**FADL**  
1930  
AHR 896



**BINT SERRA I**  
1923



**FADL**  
1930  
AHR 896



**BINT BINT SABBAH**  
1930



**Aana**  
1945  
Grey



**FAY-EL-DINE**  
1934  
AHR 1170



**Fa Saana**  
1937

**DAHMAN**

**Rabda**

**Ibn Nadra**  
1905

**Gamila**  
1900

**Farhan**  
1897

**Tarfa**  
1900

**Dahman El Azrak**  
1890

**Bint Yemama**  
1895

**IBN RABDAN**  
1917 | RAS 86

**MAHROUSSA**

**Sotamm**  
1910

**SERRA**  
1915

**IBN RABDAN**  
1917 | RAS 86

**MAHROUSSA**

**BAIYAD**  
1918 | RAS 94

**Bint Sabah**  
1925 | RAS 135