



# FARAWI

Arabian | Male | Bay

BORN April 18, 1936 · ASSOC. AHR · REG # 1203 · BREEDER WK Kellogg



## PARENTS

## GRANDPARENTS

## GREAT-GRANDPARENTS

## GG-GRANDPARENTS

SIRE LINE

DAM LINE



### FARANA

1929  
AHR 708  
Bay



### NASIK

1908  
AHR 604



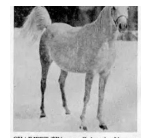
### Farasin

1920  
AHR 615



### GHAZI

1925  
AHR 560



### Gharifet

1927  
AHR 621



### RIJM

1901  
GSB 393



### Narghileh

1895  
GSB 265



### RASIM

1906  
GSB 517



### Ferda

1913  
AHR 596



### \*RODAN

1906



### GUEMURA

1912



### Rizvan

1919



### GULNARE

1914

### Mahruss II

1893

### Rose of Sharon

1885

### MESAUD

1887 | GSB 2070

### Nefisa

1885

### FEYSUL

1894 | GSB 255

### Risala

1900 | GSB 388

### RUSTEM

1908 | GSB 548

### Feluka

1899 | AHSB 10

### HARB

1901

### Rose of Sharon

1885

### Segario

1902

### Ghazala

1896 | AHR 211

### Ibn Yashmak

1902

### Rijma

1911

### \*RODAN

1906

### Ghazala

1896 | AHR 211