



GAMAAR

Arabian | Male | Bay

BORN 1963



PARENTS

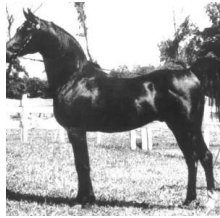
GRANDPARENTS

GREAT-GRANDPARENTS

GG-GRANDPARENTS

SIRE LINE

DAM LINE



NIGA
1957
Black



Nitez
1952
AHRA 0000



***WITEZ II**
1938
AHR 3933

Ofir
1933 | PASB 00573

Federacja
1924 | PASB 91

Raseyn
1923 | Arabian Horse Association 597

Narasa
1932

Image
1933 | AHR 1008

Rifala
1922 | Arabian Horse Association 815

Raseyn
1923 | Arabian Horse Association 597

Dirabba
1927

Ferseyn
1937 | AHR 1381

Moneyna
1937 | AHR 1352

Ferseyn
1937 | AHR 1381

Bint Sahara
1942 | AHR 2394

GAYSAR
1942 | AHR 2387

Rageyma
1936 | AHR 01289

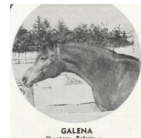
Ronek
1931

ROSE OF FRANCE
1926



Gay-Rose
1957
Bay

GAY-ROSE 11891 Ferzan x Gali-Rose
Gaihey Arabian Farms
Iowa, Ester Park



GALENA
1949



PHANTOM
1941
AHR 2186



Balena
1945



FERNEYN
1944
AHR 2865



Fersara
1947
AHR 004104



GALIMAR
1945



Bride Rose
1938



FERZON
1952
AHR 7723



Gali-Rose
1948

Gali-Rose 4619