



GAMILAS ROSE

Arabian | Female | Grey

BORN 1957



PARENTS

GRANDPARENTS

GREAT-GRANDPARENTS

GG-GRANDPARENTS

SIRE LINE

DAM LINE



GHANSHAB

1952
Bay



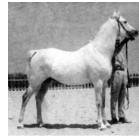
PHANTOM

1941
AHR 2186



Bride Rose

1938



ENZAHI

1935



Mamdouha

1940



Image

1933
AHR 1008



Rifala

1922
Arabian Horse Association 815



Ronek

1931



ROSE OF FRANCE

1926



NABRAS

1922



FARDOUS

1925



Kheir

1924
RAS 130



Samha

1931
RAS 199

*MIRAGE

1919 | AHR 790

Rifala

1922 | Arabian Horse Association 815

SKOWRONEK

1909 | GSB 552

Rissla

1917

Raseyn

1923 | Arabian Horse Association 597

Bahreyn

1924

Raswan

1921

JALILA

1922 | GSB 755

Unknown

Unknown

KAZMEEN

1916

BINT OBEYA

1912

IBN SAMHAN

1919

BADAOUIA

1920

BAIYAD

1918 | RAS 94

Bint Samiha

1925 | RAS 133