

# GAMYLAT

Arabian | Female | Chestnut

No Photo

BORN 1943



## PARENTS

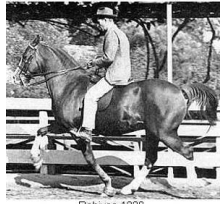
## GRANDPARENTS

## GREAT-GRANDPARENTS

## GG-GRANDPARENTS

SIRE LINE

DAM LINE



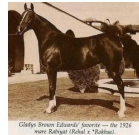
**RABIYAS**  
1936  
AHR 1236  
Chestnut

Rabiyas 1236



**RAHAS**  
1928

Rahas. A great father of Marwanis breeding and after the Marwanis dispersed a foundation sire for the horse program in California.



**RABIYAT**  
1926

Clayton Brown Edwards' Sire — Dr 1926 with Rabiyat (Sheik a "Sultan").



**GULASTRA**  
1924



**RAAD**  
1922



**REHAL**  
1923  
AHR 504



**ROKHSA**  
1915



**Sidi**  
1917



**RAMIM**  
1915



**Razaz**  
1907



**Hamasa**  
1902

**ASTRALED**  
1900 | AHR 238

**GULNARE**  
1914

**Sidi**  
1917

**Rijma**  
1911

**Sidi**  
1917

**RAMIM**  
1915

**NASIK**  
1908 | AHR 604

**ROKHAMA**  
1906

**Khaled**  
1895

**Rosa Rugosa**  
1907

**Berk**  
1903 | AHR 343

**Rim**  
1910 | GSB 581

**ASTRALED**  
1900 | AHR 238

**ROSE OF HIND**  
1902

**MESAUD**  
1887 | GSB 2070

**Bint Helwa**  
1887 | GSB 140