

GAY-ROSE

Arabian | Female | Bay

BORN 1957



PARENTS

GRANDPARENTS

GREAT-GRANDPARENTS

GG-GRANDPARENTS

SIRE LINE



FERZON

1952
AHR 7723
Grey



FERNEYN

1944
AHR 2865



Ferseyn

1937
AHR 1381



Moneyna

1937
AHR 1352



Ferseyn

1937
AHR 1381



Bint Sahara

1942
AHR 2394



GAYSAR

1942
AHR 2387



Rageyma

1936
AHR 01289



Ronek

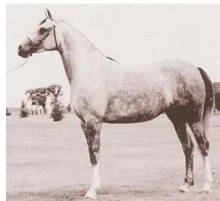
1931



ROSE OF FRANCE

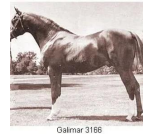
1926

DAM LINE



Gali-Rose

1948
Grey



GALIMAR

1945



Bride Rose

1938

Raseyn

1923 | Arabian Horse Association 597

Ferda

1913 | AHR 596

Raseyn

1923 | Arabian Horse Association 597

MONICA

1926 | AHR 589

Raseyn

1923 | Arabian Horse Association 597

Ferda

1913 | AHR 596

FARAWI

1936 | AHR 1203

BINT SEDJUR

1935 | AHR 1148

RIFAGE

1946 | AHR 1286

Ralouma

1935 | AHR 1132

*MIRAGE

1919 | AHR 790

Kareyma

1927 | AHR 811

Raseyn

1923 | Arabian Horse Association 597

Bahreyn

1924

Raswan

1921

JALILA

1922 | GSB 755