



GEBINA

Arabian | Female | Bay

BORN 1950



PARENTS

GRANDPARENTS

GREAT-GRANDPARENTS

GG-GRANDPARENTS

SIRE LINE



Fa El Gemar
1944
Gray



FADL
1930
AHR 896



IBN RABDAN
1917
RAS 86

RABDAN
1897 | RAS 49

Bint Gamila
1911 | RAS 60



MAHROUSSA

MABROUK MANIAL
1912

Negma
1920 | RAS 45



***MIRAGE**
1919
AHR 790

KEHILAN AJUZ

Seglawieh Jedran
1899



Rageyma
1936
AHR 01289

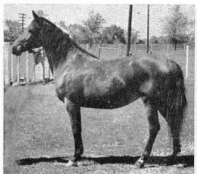


Kareyma
1927
AHR 811

Naseem
1922 | RASB 5

Julnar
1911

DAM LINE



Bambina
1942
Bay

BAMBINA 2272 (*Raffles-Rihani) died last spring of the McEwen Farm near Wichita, Kans.



RAFFLES
1926
AHR 952



SKOWRONEK
1909
GSB 552

IBRAHIM
1898 | PASB 407

Jaskolka
1891



Rifala
1922
Arabian Horse Association 815

SKOWRONEK
1909 | GSB 552

Rissla
1917

Rihani
1933
AHR 1015

***SAOUD**
1922
AHR 687

Unknown

Arjemonde
1930 | AHR 859

***Muha**
1928
AHR 689

Unknown

Noura
1916