



# HALIMA

Arabian | Female | Bay

BORN 1944 · ASSOC. RAS · REG # 420 · BREEDER ROYAL AGRICULTURAL SOCIETY



## PARENTS

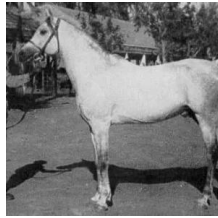
## GRANDPARENTS

## GREAT-GRANDPARENTS

## GG-GRANDPARENTS

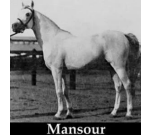
SIRE LINE

DAM LINE



### SHEIKH EL ARAB

1933  
RAS 228  
Grey



### MANSOUR

1921  
RAS 111



### Bint Sabah

1925  
RAS 135



### IBN RABDAN

1917  
RAS 86



### FARIDA

1921

### Gamil Manial

1912



### NAFAA EL SAGHIRA

1910



### KAZMEEN

1916

### Sabah

1920



### RABDAN

1897  
RAS 49



### Bint Gamila

1911  
RAS 60



### SAKLAWI II

1919  
RAS 31



### NADRA EL SAGHIRA

1910

Unknown

Unknown

### Sabbah

1895

### Nafaa El Kabira

1905

### Sotamm

1910

### Kasima

1905

### MABROUK MANIAL

1912

### BINT OBEYA

1912

### DAHMAN

### Rabda

### Ibn Nadra

1905

### Gamila

1900

### SAKLAWI I

1880

### EL DAHMA

1880

### SAMHAN

1906

### NADRA EL KEBIRA

1891