



# HARMON BAKER

American Quarter | Male | Brown

BORN 1907



## PARENTS

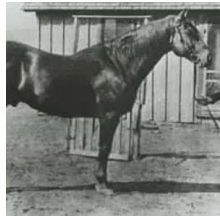
## GRANDPARENTS

## GREAT-GRANDPARENTS

## GG-GRANDPARENTS

SIRE LINE

DAM LINE



**Peter McCue**  
1895  
Bay



**Dan Tucker**  
1887

**Nora M**  
1880

**Barney Owens**  
1871

**Butt Cut**  
1876

**Voltigeur**  
1872

**Kitty Clyde**  
1860

**Martins Cold Deck**  
1868

**Nettie Overton**  
1860

**Jack Traveler**  
1873

**June Bug**  
1859

**Vandal**  
1850

**Duet**  
1864

**Star Davis**  
1849

**Margravine**  
1845

**Nona P**  
1895  
Chestnut



**Dan Tucker**  
1887

**Mollie D**  
1890

**Barney Owens**  
1871

**Butt Cut**  
1876

**Tennyson**  
1880

**Nora M**  
1880

**Martins Cold Deck**  
1868

**Nettie Overton**  
1860

**Jack Traveler**  
1873

**June Bug**  
1859

**Great Tom**  
1873

**Evadne**  
1867

**Voltigeur**  
1872

**Kitty Clyde**  
1860