



INDIAN SILVER

Arabian | Male | Grey

BORN 1970



PARENTS

GRANDPARENTS

GREAT-GRANDPARENTS

GG-GRANDPARENTS

SIRE LINE



INDIAN MAGIC

1944
GSB 2083
Grey

Indian Magic, a modern Arabian champion. His sire, Raktha, was by Naseem, and his dam, Indian Crown, was by Alimrah, Rakhla and Indian Magic both won many championships, including the "supreme champion" title. Indian Magic's dam is a half-sister of "Chocomaera" (sire) he is closely related to the latter sires as well as "Blaketta (by Naseem) and "Rakha".



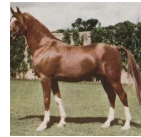
RAKTHA

1934
GSB 988



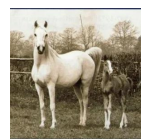
INDIAN CROWN

1935
GSB 1003



DARGEE

1945
GSB 1202



Silver Gilt

1943
GSB 1162



Naseem

1922
RASB 5



Razina

1922
GSB 759



Raseem

1922



Nisreen

1919
GSB 706

SKOWRONEK

1909 | GSB 552

Nasra

1908 | GSB 532

RASIM

1906 | GSB 517

Riyala

1905 | GSB 491

RASIM

1906 | GSB 517

Rim

1910 | GSB 581

NUREDDIN II

1911 | AHR 974

Nasra

1908 | GSB 532

Unknown

Unknown

Algol

1928

Rythma

1914 | GSB 644

FERHAN

1925

Nisreen

1919 | GSB 706

Naseem

1922 | RASB 5

Somra

1908 | GSB 542

DAM LINE



Dalika

1963
Chestnut