



# KAMLA

Arabian | Female | Grey

BORN 1942 · ASSOC. RAS · REG # 382 · BREEDER ROYAL AGRICULTURAL SOCIETY



## PARENTS

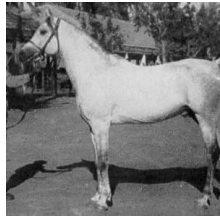
## GRANDPARENTS

## GREAT-GRANDPARENTS

## GG-GRANDPARENTS

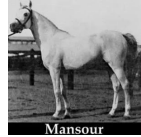
SIRE LINE

DAM LINE



### SHEIKH EL ARAB

1933  
RAS 228  
Grey



### MANSOUR

1921  
RAS 111



### Bint Sabah

1925  
RAS 135



### BAIYAD

1918  
RAS 94



### Bint Samiha

1925  
RAS 133

### Gamil Manial

1912



### NAFAA EL SAGHIRA

1910



### KAZMEEN

1916

### Sabah

1920



### MABROUK MANIAL

1912



### Bint Gamila

1911  
RAS 60



### KAZMEEN

1916



### Samiha

1918  
RAS 93

Unknown

Unknown

### Sabbah

1895

### Nafaa El Kabira

1905

### Sotamm

1910

### Kasima

1905

### MABROUK MANIAL

1912

### BINT OBEYA

1912

### Farhan

1897

### Tarfa

1900

### Ibn Nadra

1905

### Gamila

1900

### Sotamm

1910

### Kasima

1905

### Samhan

1906

### bint hadba el saghira

1912