

# KARIBA

Arabian | Male | Chestnut

No Photo

BORN 1956



## PARENTS

## GRANDPARENTS

## GREAT-GRANDPARENTS

## GG-GRANDPARENTS

SIRE LINE

DAM LINE

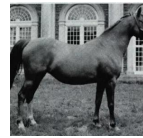


**RIFARI**  
1956  
Chestnut

Rifari (GSB)



**FARIS**  
1924



**Risslina**  
1926



**IREX**  
1927

**Manzana**  
1938



**NUREDDIN II**  
1911  
AHR 974



**Fejr**  
1911



**RAFEEF**  
1917



**Rissla**  
1917



**Naseem**  
1922  
RASB 5



**Rissla**  
1917



**NAUFAL**  
1916



**Nurschida**  
1930

**RIJM**  
1901 | GSB 393

**Narghileh**  
1895 | GSB 265

**RIJM**  
1901 | GSB 393

**Feluka**  
1899 | AHSB 10

**NASIK**  
1908 | AHR 604

**Riyala**  
1905 | GSB 491

**Berk**  
1903 | AHR 343

**Risala**  
1900 | GSB 388

**SKOWRONEK**  
1909 | GSB 552

**Nasra**  
1908 | GSB 532

**Berk**  
1903 | AHR 343

**Risala**  
1900 | GSB 388

**Sotamm**  
1910

**Narghileh**  
1895 | GSB 265

**Nuri Sherif**  
1920

**Razina**  
1922 | GSB 759

Duplicates: ● Rissla ● RIJM ● Narghileh ● Berk ● Risala

Pedigree of KARIBA | Generated June 26, 2026