

MAAZZA

Arabian | Female | Chestnut

No Photo

BORN 1943



PARENTS

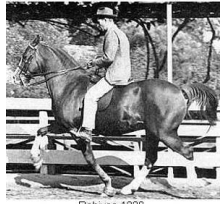
GRANDPARENTS

GREAT-GRANDPARENTS

GG-GRANDPARENTS

SIRE LINE

DAM LINE



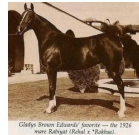
RABIYAS
1936
AHR 1236
Chestnut

Rabiyas 1236



RAHAS
1928

Rahas. A great father of Marwanis breeding and after the Marwanis dispersed a foundation sire for the horse program in California.



RABIYAT
1926

Clayton Brown Edwards' Sire — Dr 1926
from Rabiyat (Sheik's "Queen")



GULASTRA
1924



RAAD
1922



REHAL
1923
AHR 504



ROKHSA
1915



MESAOUUD
1887
GSB 2070



Rose Diamond
1890
GSB 174



***RODAN**
1906

BATHSHEBA
1913

ASTRALED
1900 | AHR 238

GULNARE
1914

Sidi
1917

Rijma
1911

Sidi
1917

RAMIM
1915

NASIK
1908 | AHR 604

ROKHAMA
1906

Aziz
1876

Yamama III
1888

Azrek
1881 | GSB #70

Rose of Jericho
1883 | GSB 86

HARB
1901

Rose of Sharon
1885

Hauran
1897

Butheyra
1904