

MARHAVA

Arabian | Female | Grey

No Photo

BORN 1944



PARENTS

GRANDPARENTS

GREAT-GRANDPARENTS

GG-GRANDPARENTS

SIRE LINE

DAM LINE



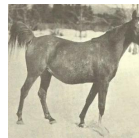
Azarah
1940
Chestnut

Azarah 1846



RAHAS
1928

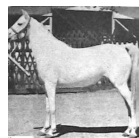
RAHAS, A great father of Marhava's breeding and after the Marhavas dispersed a foundation sire for the breed program in California.



Rayik
1926



Raseyn
1923
Arabian Horse Association 597



***MENFIS**
1927



GULASTRA
1924



RAAD
1922



REHAL
1923
AHR 504



Roshana
1920



SKOWRONEK
1909
GSB 552



Rayya
1915
GSB 657



EGIPTO
1919



SIRIA
1915

ASTRALED
1900 | AHR 238

GULNARE
1914

Sidi
1917

Rijma
1911

Sidi
1917

RAMIM
1915

Berk
1903 | AHR 343

ROKHSA
1915

IBRAHIM
1898 | PASB 407

Jaskolka
1891

RUSTEM
1908 | GSB 548

Riada
1904 | GSB 461

Wan Dick
1898

Motasen
1906

Nowick
1904

Oriental
1907