

MUSARI

Arabian | Female | Chestnut

No Photo

BORN 1941



PARENTS

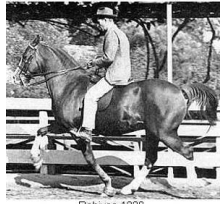
GRANDPARENTS

GREAT-GRANDPARENTS

GG-GRANDPARENTS

SIRE LINE

DAM LINE



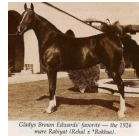
RABIYAS
1936
AHR 1236
Chestnut

Rabiyas 1236



RAHAS
1928

Rahas. A great father of Marwanis breeding and after the Marwanis dispersed a foundation sire for the breed program in California.



RABIYAT
1926

Clayton Brown Edwards' Sire — Dr 1926
with Rabiyat (Sheik'a's "Sultan").



STAMBUL
1926

Stambul 575



MOLIAH
1911
AHR 109

Molah 109



GULASTRA
1924



RAAD
1922



REHAL
1923
AHR 504



ROKHSA
1915



El Sabok
1916



Morfda
1916



***HAMRAH**
1904
AHR 28



***WADDUDA**
1899
AHRA 30

ASTRALED
1900 | AHR 238

GULNARE
1914

Sidi
1917

Rijma
1911

Sidi
1917

RAMIM
1915

NASIK
1908 | AHR 604

ROKHAMA
1906

EL JAFIL
1909

NARKEESA
1897

***HAMRAH**
1904 | AHR 28

Dahura
1909

Hamdani Simri
1899

Urfah
1898

Unknown

Unknown