

RABK

Arabian | Female | Chestnut

No Photo

BORN 1931



PARENTS

GRANDPARENTS

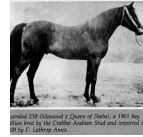
GREAT-GRANDPARENTS

GG-GRANDPARENTS

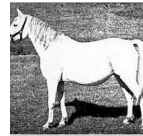
SIRE LINE



GULASTRA
1924
Chestnut



ASTRALED
1900
AHR 238



GULNARE
1914



***RODAN**
1906



Ghazala
1896
AHR 211



Sidi
1917



RAMIM
1915



NASIK
1908
AHR 604



ROKHAMA
1906



REHAL
1923
AHR 504



ROKHSА
1915

DAM LINE



RABIYAT
1926
Bay

*Gladys Brown Edwards' favorite — the 1926 mare Rabiyyat (Rehal x *Rokhsa).*

Unknown

Unknown

Unknown

Unknown

HARB

1901

Rose of Sharon

1885

Ibn Sherara

1875

Bint Helwa

1887 | GSB 140

Khaled

1895

Rosa Rugosa

1907

Berk

1903 | AHR 343

Rim

1910 | GSB 581

RIJM

1901 | GSB 393

Narghileh

1895 | GSB 265

ASTRALED

1900 | AHR 238

RABLA

1899