

RAFTER G. CHARISMA

Arabian | Female | Gray

No Photo

BORN 1971



PARENTS

GRANDPARENTS

GREAT-GRANDPARENTS

GG-GRANDPARENTS

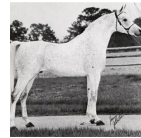
SIRE LINE

DAM LINE



Ansata El Salim

1967
AHR 41579
Gray



*ANSATA IBN HALIMA++

1958
AHR 15897



Nazeer

1934
RAS 247



HALIMA

1944
RAS 420



Fabah

1950



El Maar

1949



FAARIS

1954



Fadba

1944



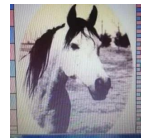
Nazeer

1934
RAS 247



EL BATAA

1944



MAARQADA

1963
AHR 25300



Faarad

1960
AHR 16703



Bint El Bataa

1955
AHR 14454

MANSOUR

1921 | RAS 111

Bint Samiha

1925 | RAS 133

SHEIKH EL ARAB

1933 | RAS 228

RAGIA

1938

FADL

1930 | AHR 896

BINT BINT SABBAH

1930

FAY-EL-DINE

1934 | AHR 1170

Maaroufa

1931

Fa-Serr

1947

Maaroufa

1931

Faddan

1935

Fay-Sabbah

1938

MANSOUR

1921 | RAS 111

Bint Samiha

1925 | RAS 133

SHEIKH EL ARAB

1933 | RAS 228

MEDALLELA

1935

Duplicates: ● Nazeer ● MANSOUR ● Bint Samiha ● SHEIKH EL ARAB ● Maaroufa

Pedigree of RAFTER G. CHARISMA | Generated June 25, 2026