



RAMSES EL KAMAL

Arabian | Female | Grey

BORN 1974 · ASSOC. AHR · REG # 107367



PARENTS

GRANDPARENTS

GREAT-GRANDPARENTS

GG-GRANDPARENTS

SIRE LINE

DAM LINE



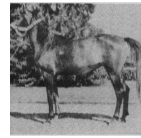
*RAMSES FAYEK

1958
Grey
Owner: PLUM GROVE FARM



Nazeer

1934
RAS 247



FAYZA II

1951



MANSOUR

1921
RAS 111



Bint Samiha

1925
RAS 133



SID ABOUHOM

1936



NEFISA

1945

Gamil Manial

1912

NAFAA EL SAGHIRA

1910

KAZMEEN

1916

Samiha

1918 | RAS 93

EL DERE

1920

LAYLA

1929

BALANCE

1928

Helwa

1940



Nazeer

1934
RAS 247



KAMLA

1942
RAS 382

MANSOUR

1921 | RAS 111

Bint Samiha

1925 | RAS 133

SHEIKH EL ARAB

1935 | RAS 228

Samha

1931 | RAS 199



Nazeer

1934
RAS 247



NEFISA

1945

MANSOUR

1921 | RAS 111

Bint Samiha

1925 | RAS 133

BALANCE

1928

Helwa

1940