



# \*RANIX

Arabian | Male | Bay

BORN 1946



## PARENTS

## GRANDPARENTS

## GREAT-GRANDPARENTS

## GG-GRANDPARENTS

SIRE LINE

DAM LINE



**RISSALIX**  
1934  
Chestnut



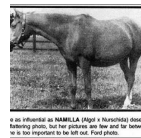
**FARIS**  
1924



**Rissla**  
1917



**Radi**  
1925  
GSB 0000



**Namilla**  
1937

2. Bay mare, IORANA, by Ch. RADI ex NAMILLA by Ch. ALGOL. IORANA was first in a class at 17 at Brookmeadow in 1945.

as influential as NAMILLA (Algo + Nurshida) does breeding photo. But her picture was too old for some. It is too important to be left out. First photo.



**NUREDDIN II**  
1911  
AHR 974



**Fejr**  
1911



**Berk**  
1903  
AHR 343



**Risala**  
1900  
GSB 388

**Rishan**  
1922  
GSB 000



**Razina**  
1922  
GSB 759



**Algol**  
1928



**Nurschida**  
1930

**RIJM**  
1901 | GSB 393

**Narghileh**  
1895 | GSB 265

**RIJM**  
1901 | GSB 393

**Feluka**  
1899 | AHSB 10

**SEYAL**  
1897 | GSB 320

**Bukra**  
1896 | GSB 283

**MESAUD**  
1887 | GSB 2070

**Ridaa**  
1892

**Nadir**  
1901

**Rish**  
1903

**RASIM**  
1906 | GSB 517

**Riyala**  
1905 | GSB 491

**\*ALDEBAR**  
1919

**Rangha**  
1911

**Nuri Sherif**  
1920

**Razina**  
1922 | GSB 759