



RASAN

Arabian | Male | Grey

BORN 1945

RASAN, AHC 3129
(HASSAN BEY 1071 ex ROSEYNA 1670)



PARENTS

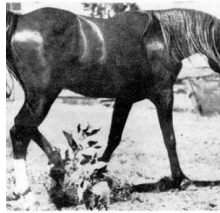
GRANDPARENTS

GREAT-GRANDPARENTS

GG-GRANDPARENTS

SIRE LINE

DAM LINE



Hassan Bey
1934
Chestnut

Ghawi
1930



Ghazil
1927



Raseyn
1923
Arabian Horse Association 597



Roshana
1920



RIBAL
1920
AHR 397



GULNARE
1914



***ABU ZEYD**
1904
AHR 82



Hamida
1908



SKOWRONEK
1909
GSB 552



Rayya
1915
GSB 657



Berk
1903
AHR 343



ROKHSa
1915

Berk
1903 | AHR 343

Rijma
1911

***RODAN**
1906

Ghazala
1896 | AHR 211

MESAUD
1887 | GSB 2070

Rose Diamond
1890 | GSB 174

DAOUD
1899 | AHSB 9

Hilmyeh
1899

IBRAHIM
1898 | PASB 407

Jaskolka
1891

RUSTEM
1908 | GSB 548

Riada
1904 | GSB 461

SEYAL
1897 | GSB 320

Bukra
1896 | GSB 283

NASIK
1908 | AHR 604

ROKHAMA
1906