

RASKAL

Arabian | Male | Bay

No Photo

BORN 1959



PARENTS

GRANDPARENTS

GREAT-GRANDPARENTS

GG-GRANDPARENTS

SIRE LINE

DAM LINE

Rabsik
1955
Bay

Tranzik
1947

Rabeyna
1942

Rasik
1929


Tranzah
1934

 **Ferdeyn**
1936

RABHA
1935

 **SKOWRONEK**
1909
GSB 552

 **Rayya**
1915
GSB 657

 ***FERDIN**
1927

 ***ROSSANA**
1921

NASIK
1908 | AHR 604

RASIMA
1917 | GSB 694

Aldebaran
1930

Farhan
1928

Raseyn
1923 | Arabian Horse Association 597

Ferdisia
1926

***RAHAL**
1924 | AHR 950

SABA
1921

IBRAHIM
1898 | PASB 407

Jaskolka
1891

RUSTEM
1908 | GSB 548

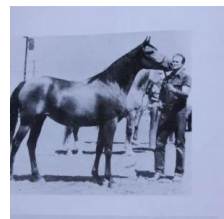
Riada
1904 | GSB 461

NUREDDIN II
1911 | AHR 974

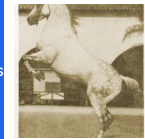
Ferda
1913 | AHR 596

SKOWRONEK
1909 | GSB 552

ROSE OF HIND
1902



Pomona Astral
1944
Bay



Raseyn
1923
Arabian Horse Association 597



Ferdana
1931