



# RDM MAAR HALIMA

Arabian | Female | Bay

BORN 1974 · BREEDER ROBERT D OR JEANNE MIDDLETON



## PARENTS

## GRANDPARENTS

## GREAT-GRANDPARENTS

## GG-GRANDPARENTS

SIRE LINE

DAM LINE



**EL HILAL**  
1966  
Grey



**\*ANSATA IBN HALIMA++**  
1958  
AHR 15897



**Nazeer**  
1934  
RAS 247



**HALIMA**  
1944  
RAS 420

**MANSOUR**  
1921 | RAS 111

**Bint Samiha**  
1925 | RAS 133

**SHEIKH EL ARAB**  
1933 | RAS 228

**RAGIA**  
1938

**MANSOUR**  
1921 | RAS 111

**Bint Samiha**  
1925 | RAS 133

**BALANCE**  
1928

**Helwa**  
1940



**BINT NEFISAA**  
1959



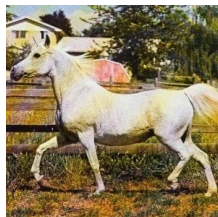
**Nazeer**  
1934  
RAS 247



**NEFISA**  
1945

**BALANCE**  
1928

**Helwa**  
1940



**MAAR-REE**  
1957  
Grey



**Fasaab**  
1948



**FADL**  
1930  
AHR 896

**IBN RABDAN**  
1917 | RAS 86

**MAHROUSSA**



**Maarou**  
1948



**BINT BINT SABBAH**  
1930

**BAIYAD**  
1918 | RAS 94

**Bint Sabah**  
1925 | RAS 135



**FAY-EL-DINE**  
1934  
AHR 1170

**FADL**  
1930 | AHR 896

**BINT SERRA I**  
1923



**Maaroufa**  
1931

**IBN RABDAN**  
1917 | RAS 86

**MAHROUSSA**