

# REDRAFF

Arabian | Male | Bay

No Photo

BORN 1948



## PARENTS

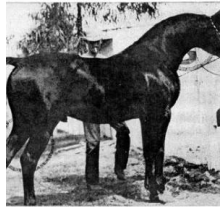
## GRANDPARENTS

## GREAT-GRANDPARENTS

## GG-GRANDPARENTS

SIRE LINE

DAM LINE



**Rasraff**  
1942  
Chestnut



**RAFFLES**  
1926  
AHR 952



**\*RASMINA**  
1928  
AHR 856



**Ferdeyn**  
1936

**OTHMANEE**  
1934



**SKOWRONEK**  
1909  
GSB 552



**Rifala**  
1922  
Arabian Horse Association 815



**SHAREER**  
1923  
GSB 780



**JALILA**  
1922  
GSB 755



**Raseyn**  
1923  
Arabian Horse Association 597



**Ferdisia**  
1926



**Joon**  
1921

**BAKOR**  
1930

**IBRAHIM**  
1898 | PASB 407

**Jaskolka**  
1891

**SKOWRONEK**  
1909 | GSB 552

**Rissla**  
1917

**NUREDDIN II**  
1911 | AHR 974

**Selima**  
1908 | GSB 540

**SKOWRONEK**  
1909 | GSB 552

**RASIMA**  
1917 | GSB 694

**SKOWRONEK**  
1909 | GSB 552

**Rayya**  
1915 | GSB 657

**RAFEEF**  
1917

**Ferda**  
1913 | AHR 596

**\*AZRA**  
1903 | AHR 32

**Dahura**  
1909

**GHAZI**  
1925 | AHR 560

**Baribeh**  
1927