



RIFARI

Arabian | Male | Chestnut

BORN 1956



PARENTS

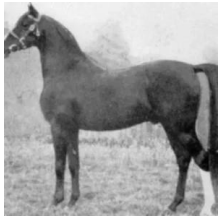
GRANDPARENTS

GREAT-GRANDPARENTS

GG-GRANDPARENTS

SIRE LINE

DAM LINE



FARIS
1924
Chestnut



NUREDDIN II
1911
AHR 974



RIJM
1901
GSB 393

Mahruss II
1893

Rose of Sharon
1885

MESAUD
1887 | GSB 2070

Nefisa
1885



Narghileh
1895
GSB 265

Mahruss II
1893

Rose of Sharon
1885

MESAUD
1887 | GSB 2070

Ferida



Fejr
1911



RIJM
1901
GSB 393

RIJM
1901 | GSB 393

Narghileh
1895 | GSB 265

ASTRALED
1900 | AHR 238

Ridaa
1892



Feluka
1899
AHSB 10



NASIK
1908
AHR 604



Riyala
1905
GSB 491

SEYAL
1897 | GSB 320

Bukra
1896 | GSB 283

MESAUD
1887 | GSB 2070

Ridaa
1892



Risslina
1926
Chestnut



RAFEEF
1917



Berk
1903
AHR 343



Risala
1900
GSB 388



Rissla
1917

Duplicates: ● RIJM ● Narghileh ● Mahruss II ● Rose of Sharon ● MESAUD ● Ridaa

Pedigree of RIFARI | Generated June 26, 2026