



*ROMANAA II

Arabian | Female | Chestnut

BORN 1963 · BREEDER EGYPTIAN AGRICULTURAL ORGANIZATION



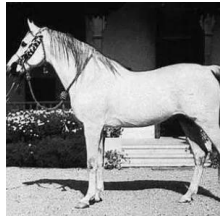
PARENTS

GRANDPARENTS

GREAT-GRANDPARENTS

GG-GRANDPARENTS

SIRE LINE



SAMEH

1945
IOHB 139
Grey



EL MOEZ

1934



IBN FAYDA

1927



BINT ZAREEFA

1926



EL DERE

1920



EL SAMRAA

1924



MANSOUR

1921
RAS 111



Bint Samiha

1925
RAS 133



Kheir

1924
RAS 130



Bint Bint Riyala

1924

IBN RABDAN

1917 | RAS 86

FAYDA

1910

HADBAN

1914

ZAREEFA

1911

Unknown

Unknown

HAB EL REAH

1920

BINT EL SHEIKH

1918

Gamil Manial

1912

NAFAA EL SAGHIRA

1910

KAZMEEN

1916

Samiha

1918 | RAS 93

IBN SAMHAN

1919

BADAOUIA

1920

GAMIL MANIAL

1912 | Egypt 13

BINT RIYALA

1920

SAMEERA

1934



Nazeer

1934
RAS 247



MALAKA

1941

DAM LINE



NAZEERA

1954
Chestnut