



ROSE OF MIRAGE

Arabian | Female | Chestnut

BORN 1954



PARENTS

GRANDPARENTS

GREAT-GRANDPARENTS

GG-GRANDPARENTS

SIRE LINE



Al-Marah Ibn In...
1951
Chestnut



INDRAFF
1938
AHR 1575



RAFFLES
1926
AHR 952

SKOWRONEK
1909 | GSB 552

Rifala
1922 | Arabian Horse Association 815

Raseem
1922

Nisreen
1919 | GSB 706

ASTRALED
1900 | AHR 238

GULNARE
1914

Raswan
1921

JALILA
1922 | GSB 755

KEHILAN AJUZ

Seglawieh Jedran
1899

Naseem
1922 | RASB 5

Julnar
1911

KEHILAN AJUZ

Seglawieh Jedran
1899

RAFEEF
1917

Julnar
1911

DAM LINE

Amulet
1946
Grey



Rose Of Luzon
1942



GULASTRA
1924



ROSE OF FRANCE
1926



***MIRAGE**
1919
AHR 790



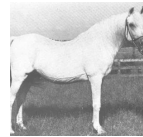
Kareyma
1927
AHR 811



***MIRAGE**
1919
AHR 790



Kiyama
1926



Ibn Mirage
1939
AHR 1763

Geyama
1937