

SABER

Arabian | Male | Chestnut

No Photo

BORN 1947



PARENTS

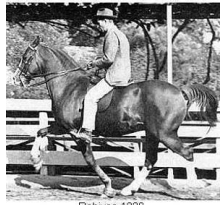
GRANDPARENTS

GREAT-GRANDPARENTS

GG-GRANDPARENTS

SIRE LINE

DAM LINE



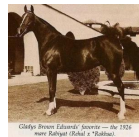
RABIYAS
1936
AHR 1236
Chestnut

Rabiyas 1236



RAHAS
1928

Rahas. A great father of Marwanis breeding and after the Marwanis dispersed a foundation sire for the heavy program in California.



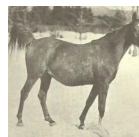
RABIYAT
1926

Clayton Brown Edwards' Sire — Dr. 1926 with Rabiyat (Sheik's "Queen").



GHAZI
1925
AHR 560

Ghazi



Rayik
1926



GULASTRA
1924



RAAD
1922



REHAL
1923
AHR 504



ROKHSA
1915



***RODAN**
1906



GUEMURA
1912



REHAL
1923
AHR 504



Roshana
1920

ASTRALED
1900 | AHR 238

GULNARE
1914

Sidi
1917

Rijma
1911

Sidi
1917

RAMIM
1915

NASIK
1908 | AHR 604

ROKHAMA
1906

HARB
1901

Rose of Sharon
1885

Segario
1902

Ghazala
1896 | AHR 211

Sidi
1917

RAMIM
1915

Berk
1903 | AHR 343

ROKHSA
1915

Duplicates: ● REHAL ● ROKHSA ● Sidi ● RAMIM

Pedigree of Saber | Generated June 25, 2026