



# SAHADI EL AJZAA

Arabian | Male | Bay

BORN March 6, 1966 · ASSOC. AHR · REG # 39695



## PARENTS

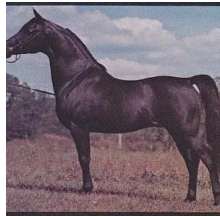
## GRANDPARENTS

## GREAT-GRANDPARENTS

## GG-GRANDPARENTS

SIRE LINE

DAM LINE



### OZEM

1961  
AHR 18939  
Black



### Fa-Serr

1947

Fa Serr (Fadl x 'Miss Serra I, A New Breed) father champion, Fa Serr and his national winners, none of his grand parents.

### gay negma

1951



### coconino

1943

COCONINO 2013 (hormonal) Henshi, T. C. Lee (A. Yacoubi, MA)



### FAY

1943



### FADL

1930  
AHR 896



### BINT SERRA I

1923



### GAYSAR

1942  
AHR 2387



### FAY-NEGMA

1938

### hammurabi

1939



### Hawija

1938



### ybarra

1934

### hilmi

1937

### IBN RABDAN

1917 | RAS 86

### MAHROUSSA

### Sotamm

1910

### SERRA

1915

### RIFAGE

1946 | AHR 1286

### Ralouma

1935 | AHR 1132

### FAY-EL-DINE

1934 | AHR 1170

### Maaroufa

1931

### NASR

1918

### HH Mohamed Alis Hamama

1927

### Ronek

1931

### Ghazil

1927

### Asil

1930

### Dowhana

1930 | AHR 858

### Mahomet

1929

### pareta

1933