

SYMPHONETTE

Arabian | Female | Bay

No Photo

BORN 1965



PARENTS

GRANDPARENTS

GREAT-GRANDPARENTS

GG-GRANDPARENTS

SIRE LINE

DAM LINE

Raskal
1959
Bay

Rabsik
1955



Pomona Astral
1944

Tranzik
1947

Rabeyna
1942



Raseyn
1923
Arabian Horse Association 597



Ferdana
1931

Rasik
1929

Tranzah
1934

Ferdeyn
1936

RABHA
1935

SKOWRONEK
1909 | GSB 552

Rayya
1915 | GSB 657

***FERDIN**
1927

***ROSSANA**
1921

Raseyn
1923 | Arabian Horse Association 597

***NAKKLA**
1932

Fa El Gemar
1944

Bambina
1942

***MIRAGE**
1919 | AHR 790

Rifala
1922 | Arabian Horse Association 815

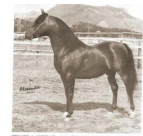
NAWAB
1905

SIMRIEH
1903



BINT GESAKKLA
1960
AHR 16252
Bay

BINT GESAKKLA 16252



Gesakkla
1956



IMNA
1942



Rasakkla
1942



Gebina
1950



Image
1933
AHR 1008



SELMNAB
1920