

TOURMALINE

Arabian | Female | Bay

No Photo

BORN 1970 · ASSOC. Arabian Horse Association · REG # 61062



PARENTS

GRANDPARENTS

GREAT-GRANDPARENTS

GG-GRANDPARENTS

SIRE LINE

Attock

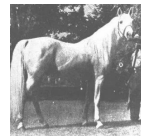
1962
Bay
Owner: Robert & Irene Burnett

DAM LINE



Tangyya

1946
AHRA 3811
Grey



Czubuthan

1933
Arabian Horse Association 1499



Ba-Ida

1932



Dzingishan III

1912

Ryfka

1925



Flisak

1924



pomponia 11

1924
pasb pasb 329

Hermit

1895

Oaza

1901

Mazepa I

1910

Fryga

1914

BAKSZYSZ

1901 | PASB 31

Elstera

1913

Mazepa I

1910

fanfara

1914 | pasb PASB*83